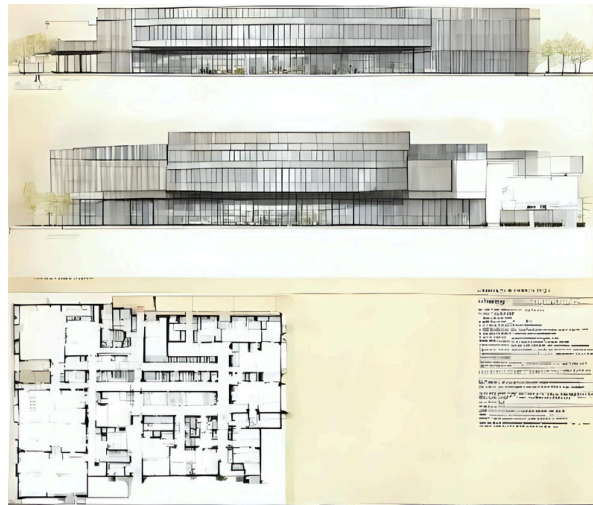


Architectural Plans: 30,000 sq. ft. One-Level Civic Center with Library and Hall Rental Space

1. Project Overview



A single-story, 30,000-square-foot civic center designed to serve as a multifunctional community hub. The facility integrates a public library, a large event hall, administrative offices, and flexible meeting spaces, all on one accessible level. The design emphasizes openness, accessibility, and sustainability while fostering civic engagement and cultural enrichment.

2. Site Layout

Total Site Area: Approximately 80,000–100,000 sq. ft. (2–2.5 acres)

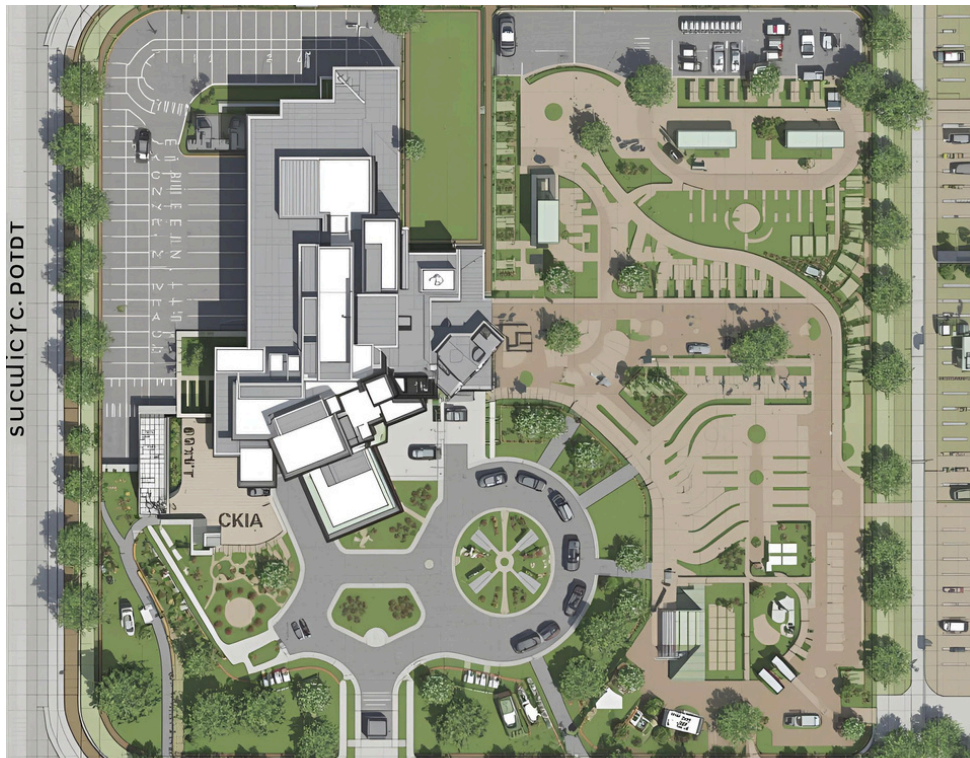
Building Footprint: 30,000 sq. ft.

Zoning: Civic and community use

Access: Main public entrance from primary road; secondary service access at rear

Key Zones:

- Main civic building
- Outdoor plaza and amphitheater
- Parking lot (100–120 vehicles)
- Landscaped gardens and pedestrian walkways
- Service and maintenance area



3. Building Layout (One Level – 30,000 sq. ft.)

A. Main Entrance and Lobby (2,500 sq. ft.)

- Central reception and information desk
- Digital directory and community display wall
- Lounge seating and public art installation
- Direct access to library, hall, and meeting areas



B. Public Library (8,000 sq. ft.)

- General reading and study areas
- Children's reading zone
- Teen and digital media section

- Computer lab and technology hub
- Book stacks and archives
- Librarian offices and storage
- Restrooms and quiet study rooms



C. Event Hall and Multipurpose Space (8,000 sq. ft.)

- Main hall (capacity: 400–500 people)
- Stage with backstage storage and dressing rooms
- Audio-visual control booth
- Catering kitchen and prep area
- Retractable seating for flexible configurations
- Separate restrooms and service corridor
- Direct access to outdoor plaza for extended events



D. Administrative and Support Wing (4,000 sq. ft.)

- Offices for civic administration and staff
- Conference room and records storage
- Break room and kitchenette
- Janitorial and maintenance rooms
- Mechanical/electrical rooms and IT hub



E. Meeting and Community Rooms (3,000 sq. ft.)

- Three flexible meeting rooms (1,000 sq. ft. each)
- Movable partitions for combined use
- Audio-visual equipment and presentation setup
- Accessible from main lobby and library



F. Gallery and Exhibition Corridor (1,500 sq. ft.)

- Central hallway connecting major zones
- Display walls for local art and cultural exhibits
- Natural lighting through skylights



G. Circulation and Restrooms (3,000 sq. ft.)

- Wide corridors for accessibility
- Public restrooms near main zones
- Emergency exits and fire safety systems

4. Structural and Material Specifications



- **Foundation:** Reinforced concrete slab-on-grade
- **Structure:** Steel frame with concrete block infill
- **Roof:** Insulated metal panels with skylights
- **Exterior Finish:** Brick veneer and glass curtain walls
- **Flooring:** Polished concrete in public areas; carpet tiles in offices and library
- **Windows:** Double-glazed, low-emissivity glass
- **Ceiling Height:** 12 ft (library and offices), 24 ft (event hall)

5. Sustainability Features

- Solar photovoltaic panels for partial power supply
- Rainwater harvesting and greywater reuse system
- Energy-efficient HVAC and LED lighting
- Natural daylighting through skylights and clerestory windows
- Use of recycled and locally sourced materials

- Green roof section for insulation and stormwater management



6. Accessibility and Safety

- Fully ADA-compliant entrances, restrooms, and pathways
- Wide corridors and automatic doors
- Fire alarms, sprinklers, and emergency lighting
- Clearly marked evacuation routes and signage

7. Landscape and Outdoor Design

- Central plaza with seating and shade structures
- Outdoor amphitheater for performances and gatherings
- Walking paths and native landscaping
- Bicycle racks and pedestrian-friendly access
- Public art installations and water feature



8. Parking and Circulation

- 100–120 parking spaces, including 8 accessible spots
- Dedicated loading/unloading zone for hall events
- Separate staff parking area
- Clearly defined pedestrian crossings and lighting



9. Estimated Construction Phases

1. **Site Preparation and Foundation:** 3 months
2. **Structural Framework:** 4 months
3. **Roofing and Exterior Finishes:** 3 months
4. **Interior Build-Out and Systems Installation:** 4 months
5. **Landscaping and Final Inspection:** 2 months

Total Estimated Duration: 16 months

10. Design Concept Summary

The one-level, 30,000-square-foot civic center is designed for accessibility, efficiency, and community connection. The open layout ensures seamless movement between the library, event hall, and meeting spaces. Natural light, sustainable materials, and flexible spaces create a welcoming environment for learning, collaboration, and celebration. The design serves as a modern civic landmark that reflects community values and fosters engagement for all ages.

